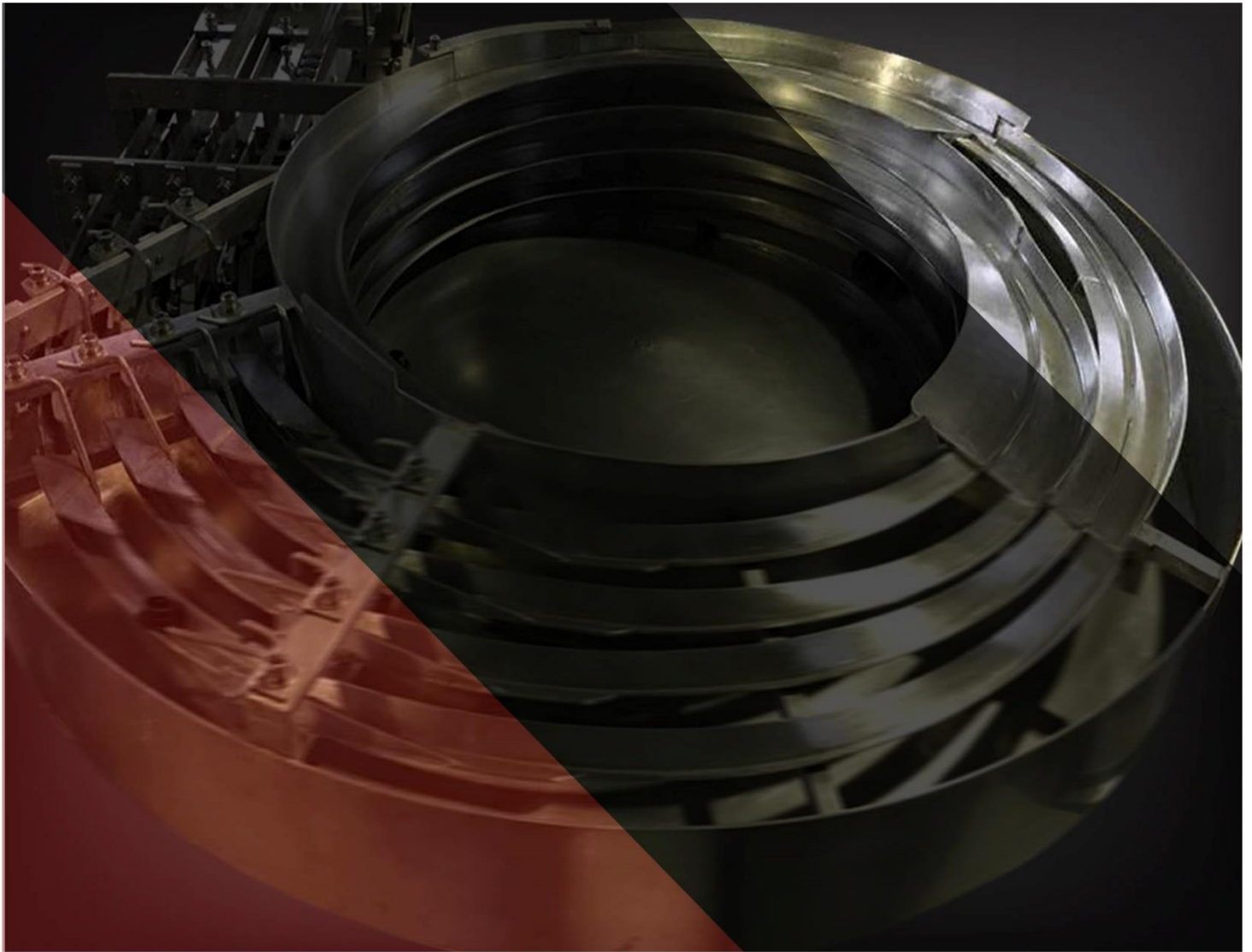


Parts Feeder Specialist



# HI-FEED TECHNOLOGY

Parts Handling Specialist

## Malaysia

### Hi-Feed Technology Sdn. Bhd.

No. 1, Jalan Anggerik  
Mokara 31/53  
Kota Kemuning, 40460  
Shah Alam, Selangor,  
Malaysia.

Tel : 603-5124 8130/31  
Fax : 603-5124 8134

E-mail : [sales@hifeed.com.my](mailto:sales@hifeed.com.my)  
Website : [www.hifeed.com.my](http://www.hifeed.com.my)

## Singapore

### SJR Automation Pte. Ltd.

100 Eunos Avenue 7,  
#03-14,  
Singapore 409572.

Tel : +65 6909 7668  
Mobile : +65 9383 6118

Email : [sales@sjrautomation.com](mailto:sales@sjrautomation.com)  
Website : [www.sjrautomation.com](http://www.sjrautomation.com)

**Hi-Feed Technology Sdn. Bhd**

No.1, Jalan Anggerik Mokara 31/53,  
Kota Kemuning, 40460 Shah Alam,  
Selangor, Malaysia.

Tel : 603-5124 8130/31

Fax : 603-5124 8134

Email : [sales@hifeed.com.my](mailto:sales@hifeed.com.my)

Website : [www.hifeed.com.my](http://www.hifeed.com.my)



## About The Company

Hi-Feed Technology Sdn. Bhd. is established in 1995 in Malaysia. For over 20 years, Hi-Feed Technology Sdn. Bhd. has been a recognized name in the Malaysia parts handling industry. The orienting and conveying of parts has been the very core of our existence, providing for our customers from various industries at different location in the world. We provide a one-stop solution for vibratory parts feeder equipment, bespoke tooling and machining services.

Choosing the right automation solution partner is critical to the long-term success of your business. It can make a big difference in your plant's productivity, as well as the opportunities and potential for the future development. Hi-Feed Technology has all the must-haves for you seeking for in an automation partner.

In 2018, We expanded our business into Singapore and opened SJR Automation Pte. Ltd.

Hi-Feed Technology is proud to be the authorised dealer for RNA components in Southeast Asia.



## Table of Contents

**02** | ABOUT THE COMPANY  
- HI-FEED TECHNOLOGY

**04** | PARTS FEEDER SYSTEMS

**05** | PRODUCTS & SERVICES

**06** | COMPONENTS  
~ 11 - DRIVE UNITS

**12** | COMPONENTS  
~ 15 - LINEAR FEEDERS

**16** | COMPONENTS  
- CONTROL UNITS

**17** | STANDARD BOWL TOP

**18** | TREATMENTS

**19** | CNC PRECISION BOWL



Feeding system is available from



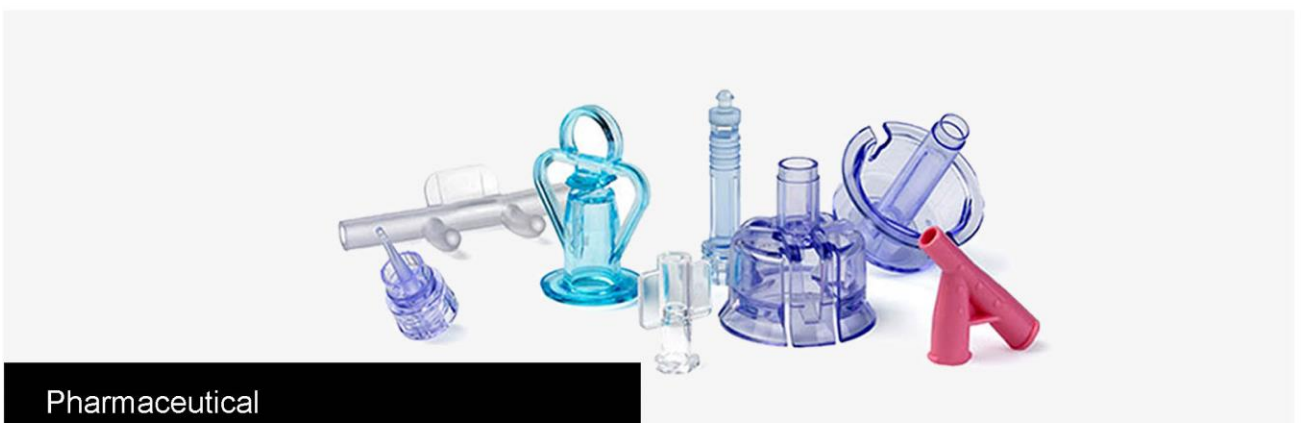
Food Stuff



Cosmetic



Electronics & Automotive

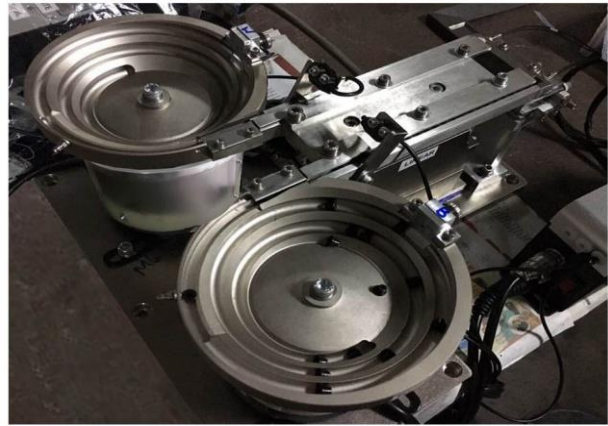


Pharmaceutical

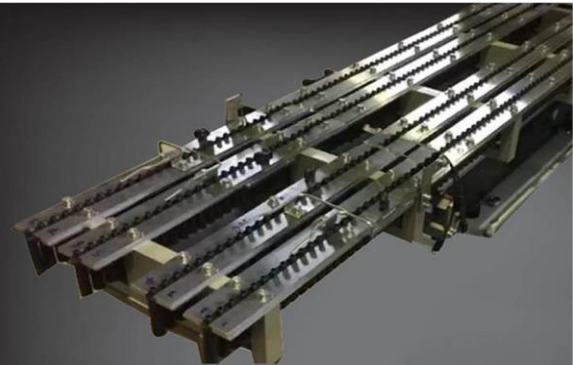
## Products and Services

Hi-Feed Technology manufactured vibratory bowl feeder, CNC precision bowl and also supply all kinds of industrial use parts feeder systems such as internal bowl treatments and standards parts feeder.

At our company, we pride ourselves on exceptional quality. Our vibratory parts feeding system is custom made specifically to suit our customer's unique requirements and needs.



Stainless Steel Bowl Feeder



Linear Feeder



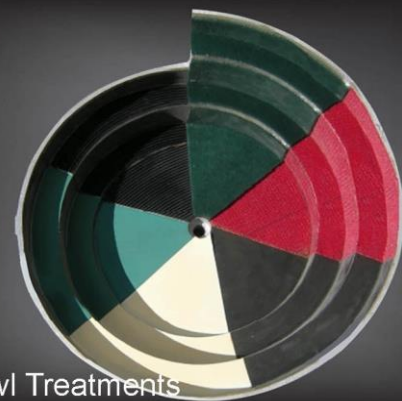
Sound Enclosure



Hopper



CNC 5-Axis Cutting



Bowl Treatments



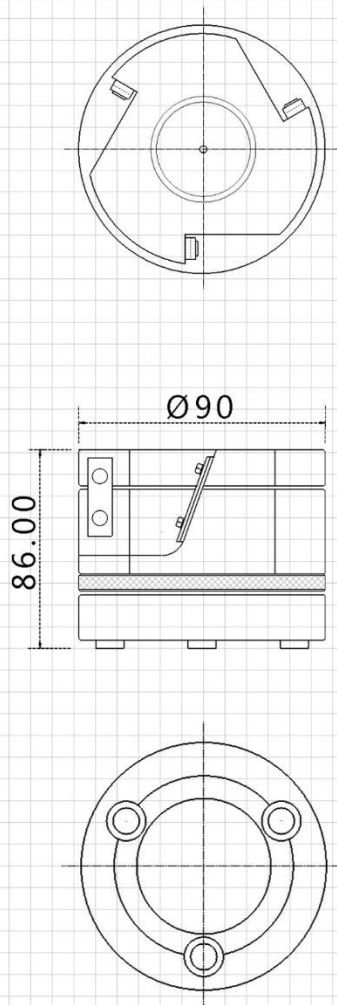
## HFD Series ( Precision Small Size Type)

HFD series drive units are suitable for small and delicate precision parts. Feature in small amplitudes and fine vibration which is optimal for a smooth and stable transportation for delicate feeding.

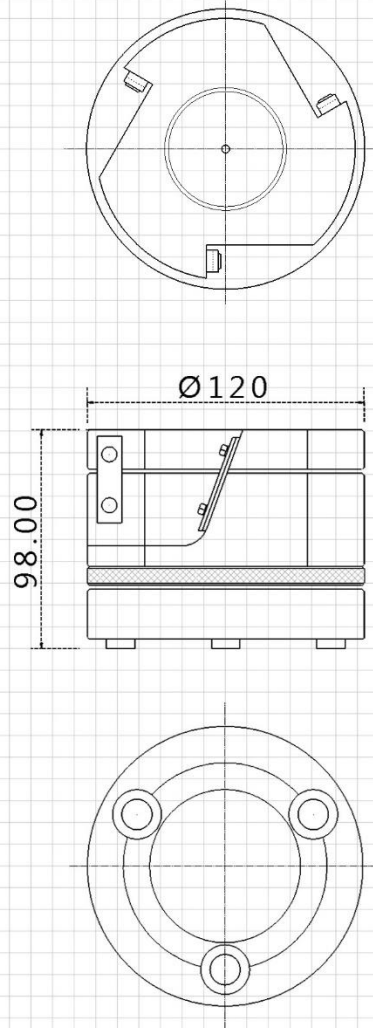


### Dimensional Drawing

[HFD-90]



[HFD-120]



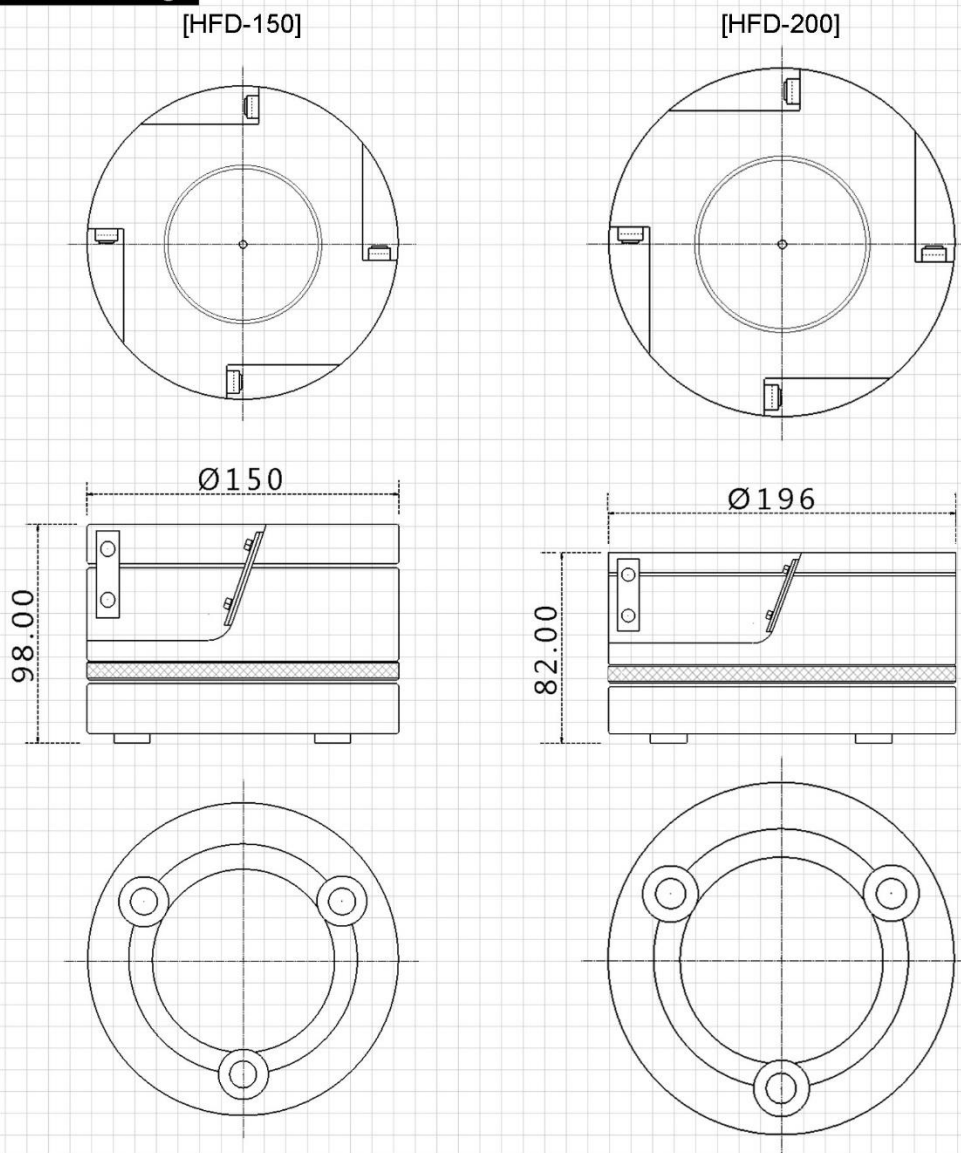
#### Features

- Small amplitudes and stable vibration.
- Lighter and compact.
- Ideal for small delicate precision parts.
- Powered by electromagnetic coil.

### Specification

| Model   | Weight (KG) | Input Voltage (V) | Rated Current (A) | Frequency of vibration (time/min) | Standard Bowl Diameter (Ø) | Applicable Controller  |
|---------|-------------|-------------------|-------------------|-----------------------------------|----------------------------|------------------------|
| HFD-90  | 3.0         | 200/220           | 0.5               | 5000-9000                         | 90-120                     | HFC/<br>Frequency Type |
| HFD-120 | 5.0         | 200/220           | 1.0               | 5000-9000                         | 150-180                    | HFC/<br>Frequency Type |

## Dimensional Drawing



## Specification

| Model   | Weight (KG) | Input Voltage (V) | Rated Current (A) | Frequency of vibration (time/min) | Standard Bowl Diameter (Ø) | Applicable Controller  |
|---------|-------------|-------------------|-------------------|-----------------------------------|----------------------------|------------------------|
| HFD-150 | 8.0         | 110/220           | 1.0               | 5000-9000                         | 180-200                    | HFC/<br>Frequency type |
| HFD-200 | 10.0        | 110/220           | 1.5               | 5000-9000                         | 220-280                    | HFC/<br>Frequency type |

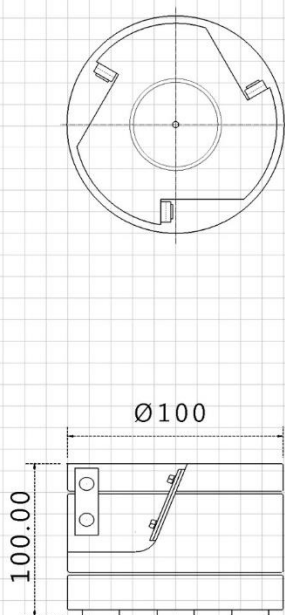
## DF Series ( Precision Small Size Type)

DF series drive units are suitable for small and delicate precision parts. Feature in small amplitudes and fine vibration which is optimal for a smooth and stable transportation for delicate feeding. Its compact design requires only minimal space.

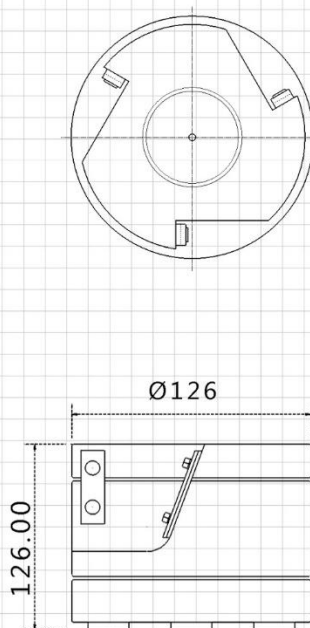


### Dimensional Drawing

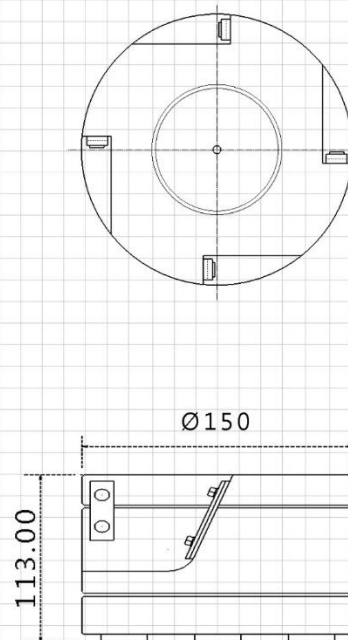
[DF-10]



[DF-120]



[DF-15]



#### Features

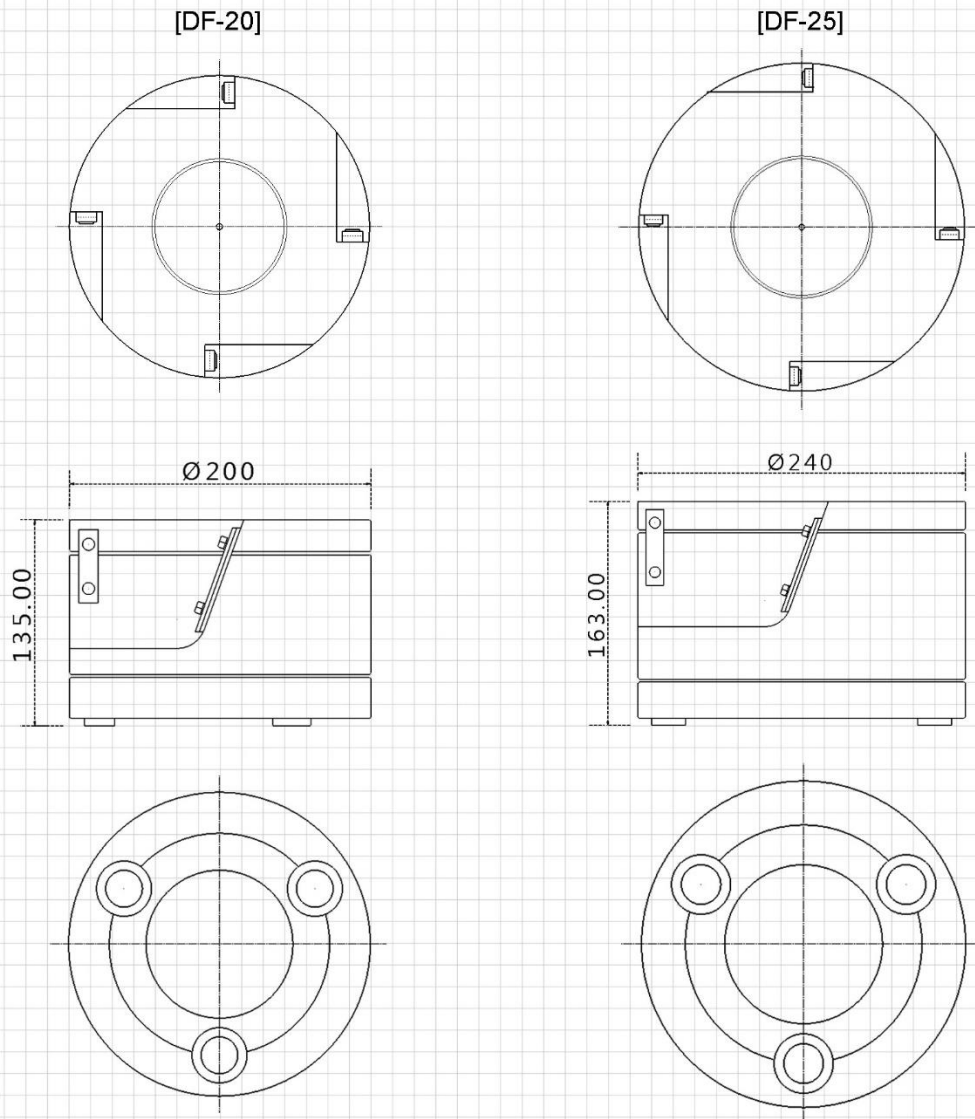
- Small amplitudes and stable vibration.
- Lighter weight and compact size.
- Ideal for small delicate precision parts.
- Powered by electromagnetic coil.

### Specification

| Model  | Weight (KG) | Input Voltage (V) | Rated Current (A) | Frequency of vibration (time/min) | Standard Bowl Diameter (Ø) | Applicable Controller |
|--------|-------------|-------------------|-------------------|-----------------------------------|----------------------------|-----------------------|
| DF-10  | 4.0         | 200/220           | 1.0               | 3600-7200                         | 100-120                    | HFC / Frequency Type  |
| DF-120 | 6.0         | 200/220           | 1.5               | 3600-7200                         | 120-180                    | HFC / Frequency Type  |
| DF-15  | 8.0         | 200/220           | 1.5               | 3600-7200                         | 150-200                    | HFC / Frequency Type  |



## Dimensional Drawing



## Specification

| Model | Weight (KG) | Input Voltage (V) | Rated Current (A) | Frequency of vibration (time/min) | Standard Bowl Diameter (Ø) | Applicable Controller  |
|-------|-------------|-------------------|-------------------|-----------------------------------|----------------------------|------------------------|
| DF-20 | 16.0        | 200/220           | 2.0               | 3600-7200                         | 250-300                    | HFC/<br>Frequency type |
| DF-25 | 20.0        | 200/220           | 2.5               | 3600-7200                         | 350-400                    | HFC/<br>Frequency type |

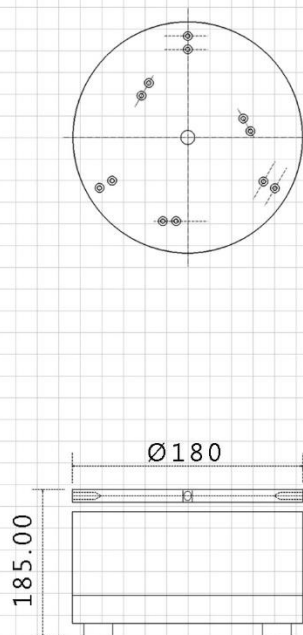
## BF Series (Large Size Type)

BF series drive units are suitable for medium and large parts feeding. Feature in larger amplitudes which is optimal for heavier and larger workpiece and ideal for a wider range application.

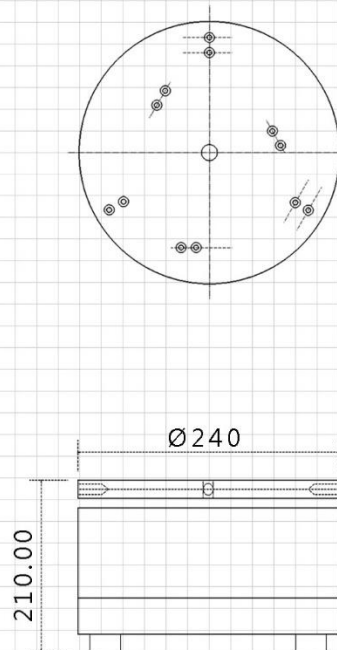


### Dimensional Drawing

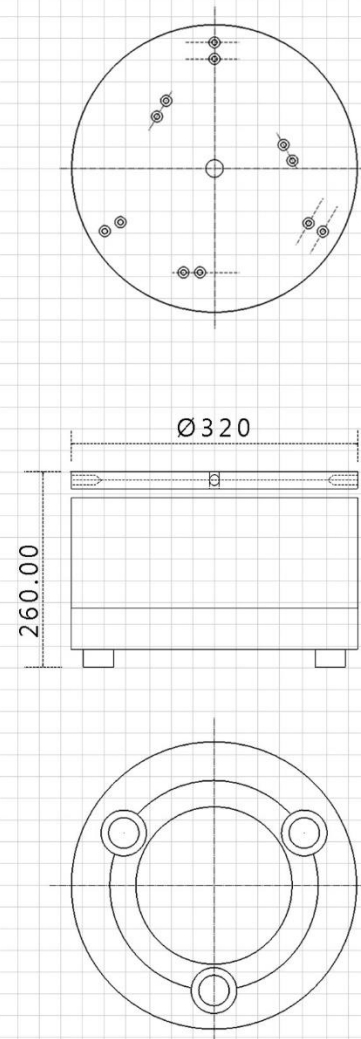
[BF-20]



[BF-25]



[BF-35]



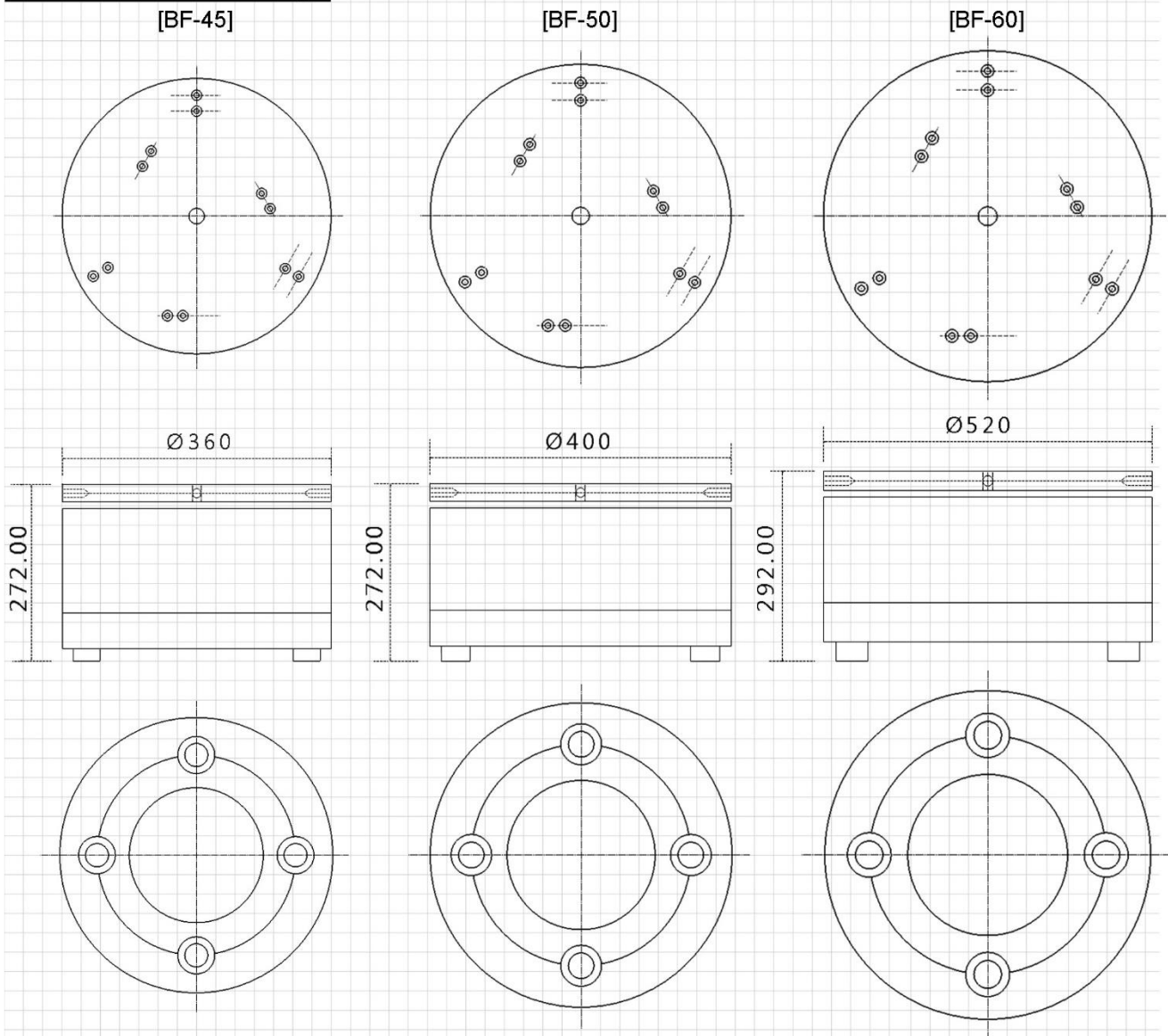
#### Features

- Large amplitudes.
- Optimal for heavier/ larger workpiece.
- Wider range of application.
- Powered by electromagnetic coil.

### Specification

| Model | Weight (KG) | Input Voltage (V) | Rated Current (A) | Frequency of vibration (time/min) | Standard Bowl Diameter (Ø) | Applicable Controller  |
|-------|-------------|-------------------|-------------------|-----------------------------------|----------------------------|------------------------|
| BF-20 | 18.0        | 200/220           | 2.0               | 3600-7200                         | 200-250                    | HFC/<br>Frequency Type |
| BF-25 | 25.0        | 200/220           | 3.0               | 3600-7200                         | 250-300                    | HFC/<br>Frequency Type |
| BF-35 | 40.0        | 200/220           | 4.0               | 3600-7200                         | 350-400                    | HFC/<br>Frequency Type |

## Dimensional Drawing



## Specification

| Model | Weight (KG) | Input Voltage (V) | Rated Current (A) | Frequency of vibration (time/min) | Standard Bowl Diameter (Ø) | Applicable Controller  |
|-------|-------------|-------------------|-------------------|-----------------------------------|----------------------------|------------------------|
| BF-45 | 60.0        | 200/220           | 4.0               | 3000-3600                         | 400-450                    | HFC/<br>Frequency type |
| BF-50 | 70.0        | 200/220           | 4.0               | 3000-3600                         | 450-500                    | HFC/<br>Frequency type |
| BF-60 | 120.0       | 200/220           | 5.0               | 3000-3600                         | 500-700                    | HFC/<br>Frequency type |



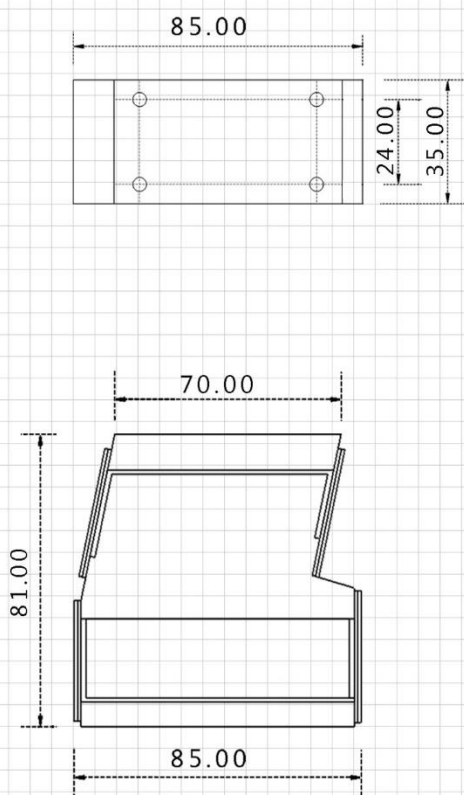
## LFD Series ( Precision Small Size Type)

LFD series drive units are suitable for precision parts. Feature in leaf spring to absorb rebound which is optimal for a smooth and stable transportation for delicate feeding. It is ideal for micro-sized workpiece.

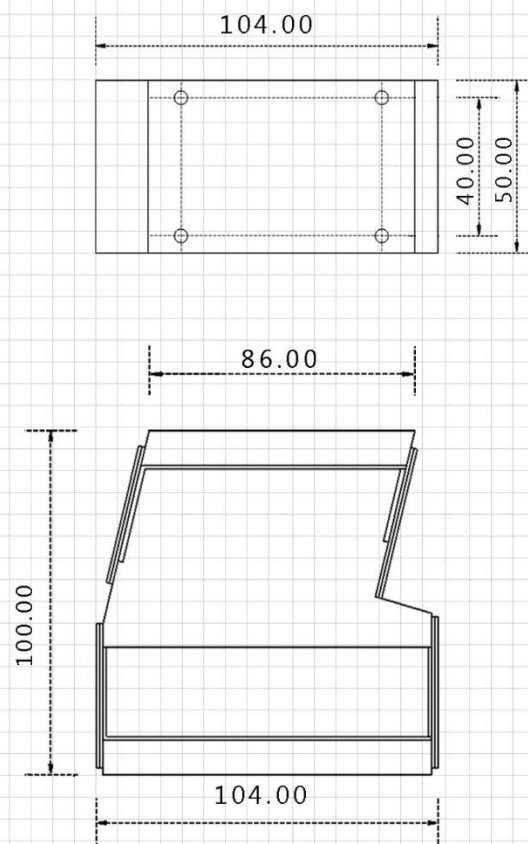


### Dimensional Drawing

[LFD-70]



[LFD-86]



#### Features

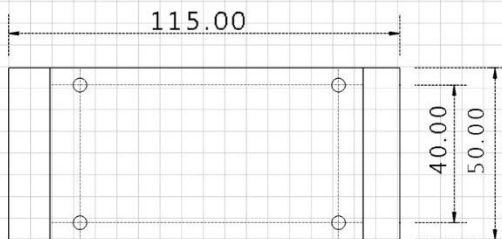
- Leaf spring installed to absorb rebounds.
- Optimal for small precision parts.
- Ideal for micro sized work piece.
- Powered by electromagnetic coil.

### Specification

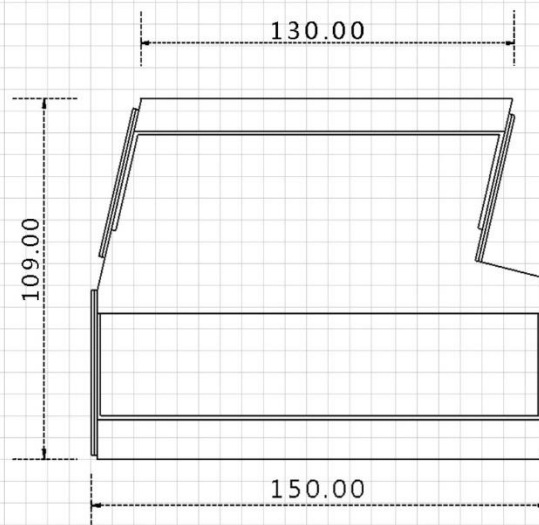
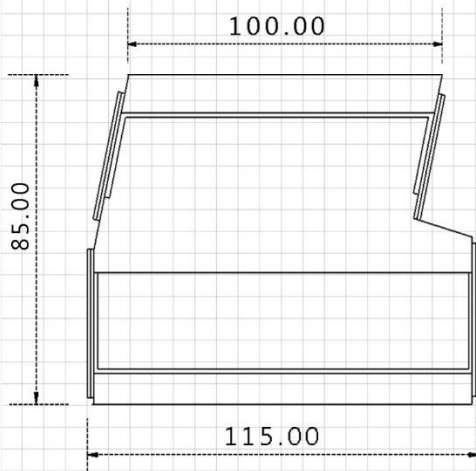
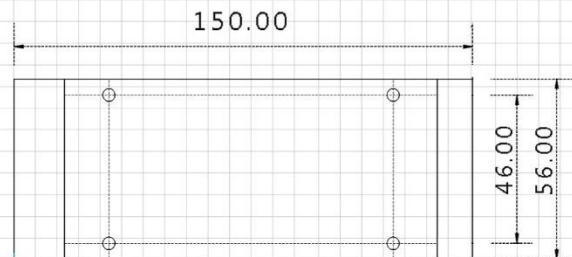
| Model  | Weight (KG) | Input Voltage (V) | Rated Current (A) | Frequency of vibration (min) | Track Length (mm) | Applicable Controller  |
|--------|-------------|-------------------|-------------------|------------------------------|-------------------|------------------------|
| LFD-70 | 1.0         | 200/220           | 1.0               | 3600-7200                    | 200-280           | HFC/<br>Frequency Type |
| LFD-86 | 2.0         | 200/220           | 1.5               | 3600/7200                    | 300-350           | HFC/<br>Frequency Type |

## Dimensional Drawing

[LFD-100]



[LFD-130]



## Specification

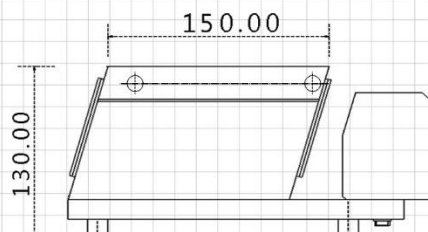
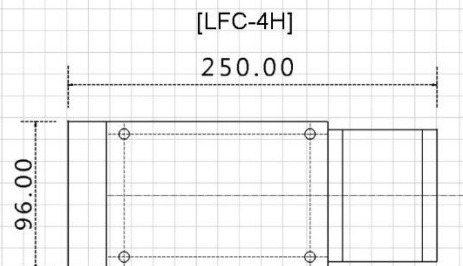
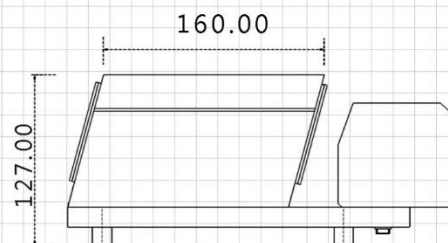
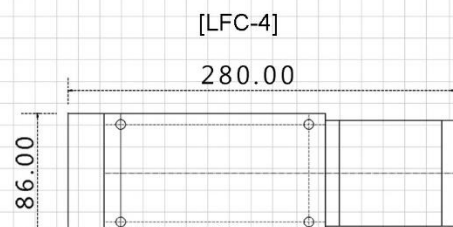
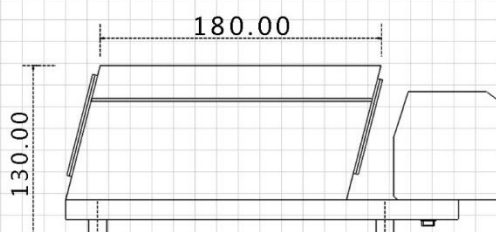
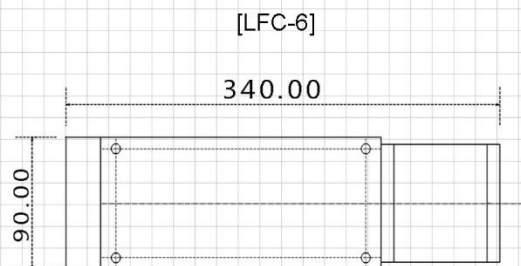
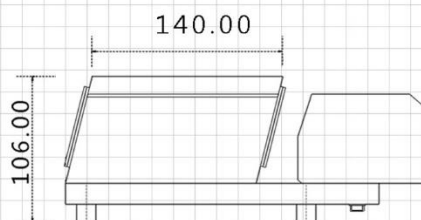
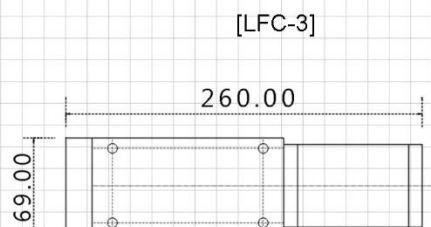
| Model   | Weight (KG) | Input Voltage (V) | Rated Current (A) | Frequency of vibration (time/min) | Track Length (mm) | Applicable Controller  |
|---------|-------------|-------------------|-------------------|-----------------------------------|-------------------|------------------------|
| LFD-100 | 3.0         | 200/220           | 1.5               | 3600-7200                         | 350-400           | HFC/<br>Frequency type |
| LFD-130 | 6.0         | 200/220           | 2.0               | 3600-7200                         | 400-450           | HFC/<br>Frequency type |

## LFC Series (Large Size Type)

LFC series is designed for small and medium-sized parts feeding. Featured in larger amplitude and frequency, which allows parts to travel a longer distance. It is suitable for a wide range of applications which are also ideal for a larger workpiece.



### Dimensional Drawing



#### Features

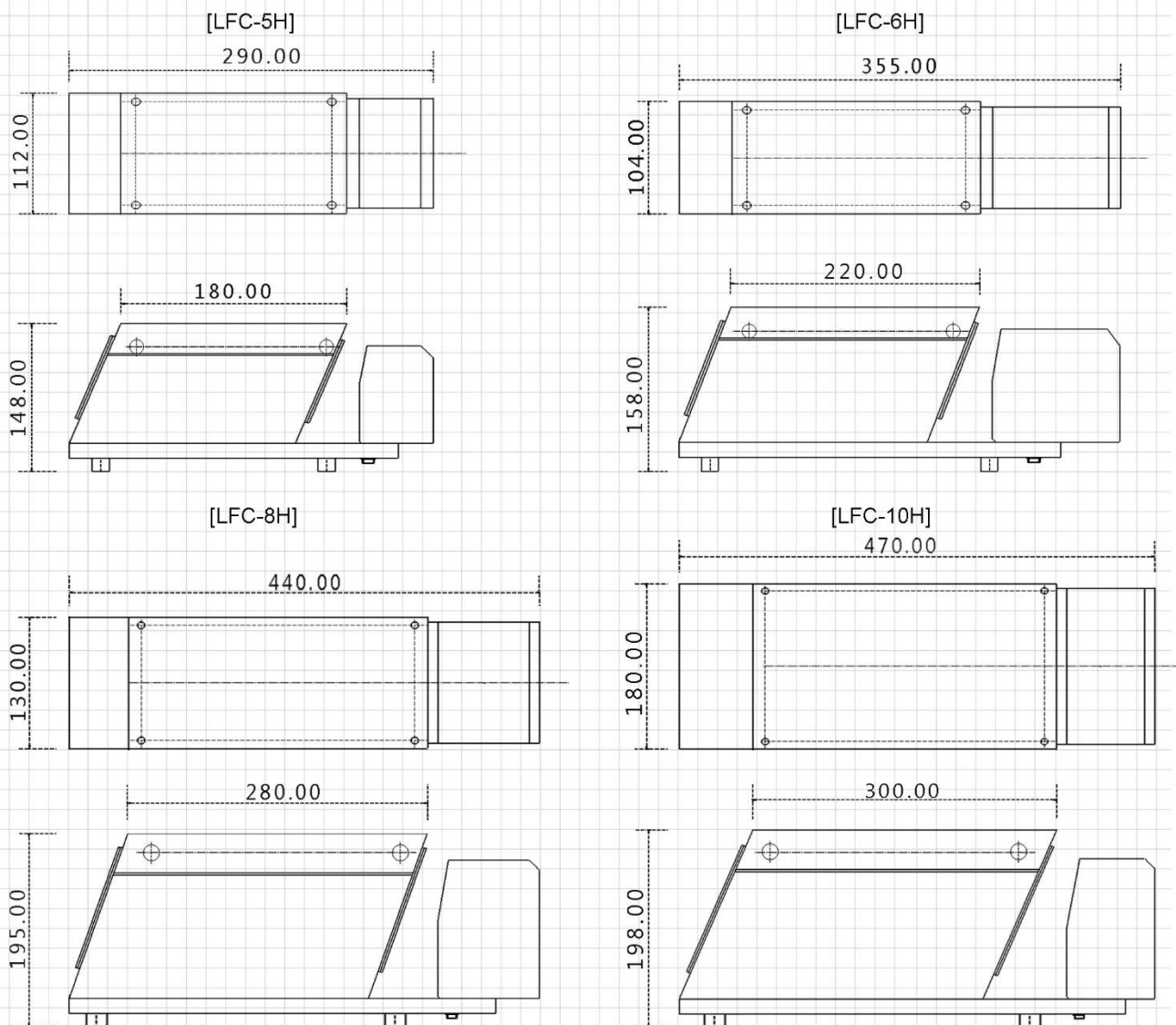
- Large amplitudes.
- Optimal for heavier/ larger workpiece.
- Wider range of application.
- Powered by electromagnetic coil.

### Specification

| Model  | Weight (KG) | Input Voltage (V) | Rated Current (A) | Frequency of vibration (time/min) | Track Length (mm) | Applicable Controller  |
|--------|-------------|-------------------|-------------------|-----------------------------------|-------------------|------------------------|
| LFC-3  | 5.0         | 200/220           | 1.0               | 3600-7200                         | 300-400           | HFC/<br>Frequency Type |
| LFC-4  | 7.0         | 200/220           | 2.0               | 3000-3600                         | 450-500           | HFC/<br>Frequency Type |
| LFC-6  | 8.0         | 200/220           | 2.0               | 3000-3600                         | 450-600           | HFC/<br>Frequency Type |
| LFC-4H | 7.0         | 200/220           | 2.0               | 3000-3600                         | 200x500           | HFC/<br>Frequency Type |



## Dimensional Drawing



## Specification

| Model   | Weight (KG) | Input Voltage (V) | Rated Current (A) | Frequency of vibration (time/min) | Track Length (mm) | Applicable Controller  |
|---------|-------------|-------------------|-------------------|-----------------------------------|-------------------|------------------------|
| LFC-5H  | 10.0        | 200/220           | 3.0               | 3000-3600                         | 250 x 650         | HFC/<br>Frequency Type |
| LFC-6H  | 12.0        | 200/220           | 3.0               | 3000-3600                         | 450-600           | HFC/<br>Frequency Type |
| LFC-8H  | 30.0        | 200/220           | 3.0               | 3000-3600                         | 600-800           | HFC/<br>Frequency Type |
| LFC-10H | 40.0        | 200/220           | 4.0               | 3000-3600                         | 800-900           | HFC/<br>Frequency Type |

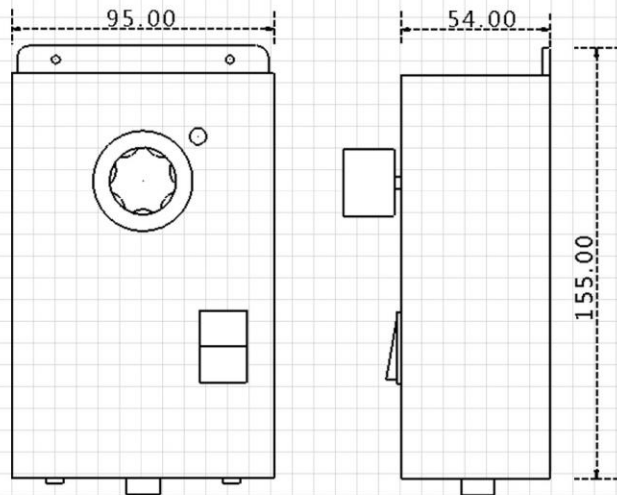
## Control Unit

The HFC series is a versatile control unit which can accommodate a wide variety of equipment. The front dial permits free adjustment of vibrations to ensure optimal performance for its application. The main voltage is 110/220; 50 or 60Hz, single phase.

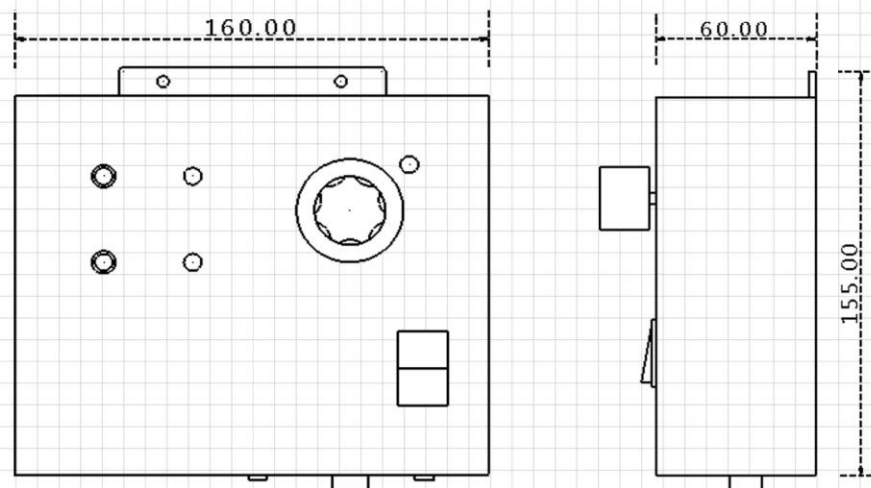


## Dimensional Drawing

[HFC-10A]



[HFC-20A]



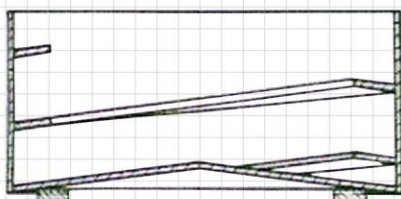
### Features

- Compatible to wide range of equipment
- Free adjustment of vibration

## Specification

| Model    | Input Voltage | Max Amps | Output Waveform                       | Start/Stop by External Signal | Soft Start   | Timer Delay On/Off |
|----------|---------------|----------|---------------------------------------|-------------------------------|--------------|--------------------|
| HFC-10A  | AC220V,50Hz   | 5.0A     | Fullwave/ Halfwave (Select by Jumper) | Available                     | -            | -                  |
| HFC-10AS | AC220V,50Hz   | 5.0A     | Fullwave/ Halfwave (Select by Jumper) | Available                     | Yes (1.0sec) | -                  |
| HFC-20A  | AC220V,50Hz   | 5.0A     | Fullwave/ Halfwave (Select by Jumper) | Available                     | -            | 0-10.0sec          |
| HFC-20AS | AC220V,50Hz   | 5.0A     | Fullwave/ Halfwave (Select by Jumper) | Available                     | Yes (1.0sec) | 0-10.0sec          |

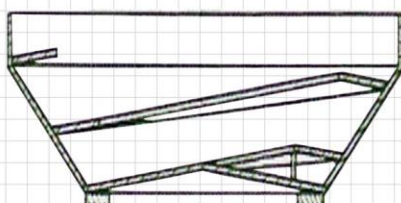
## Standard Top Bowl



### Cylindrical Bowl

- Provide constant feeding of components
- Ideal for small components

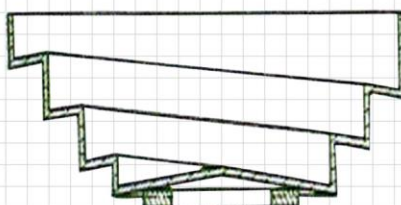
| Drive Unit | Applicable Bowl Diameter (Ø) | Track Width (mm) | Height (mm) |
|------------|------------------------------|------------------|-------------|
| DF-15      | 160                          | 12               | 65          |
| BF-25      | 250                          | 20               | 90          |
| BF-35      | 350                          | 25               | 120         |
| BF-45      | 450                          | 40               | 180         |
| BF-50      | 550                          | 50               | 140         |
| BF-60      | 650                          | 50               | 180         |



### Conical Bowl

- Pre-separation of components
- Higher capacity
- Ideal for heavy sharp-edges components

| Drive Unit | Applicable Bowl Diameter (Ø) | Track Width (mm) | Height (mm) |
|------------|------------------------------|------------------|-------------|
| DF-15      | 180                          | 15               | 65          |
| BF-25      | 300                          | 20               | 90          |
| BF-35      | 400                          | 30               | 120         |
| BF-45      | 500                          | 60               | 140         |
| BF-50      | 650                          | 50               | 180         |



### Stepped Bowl

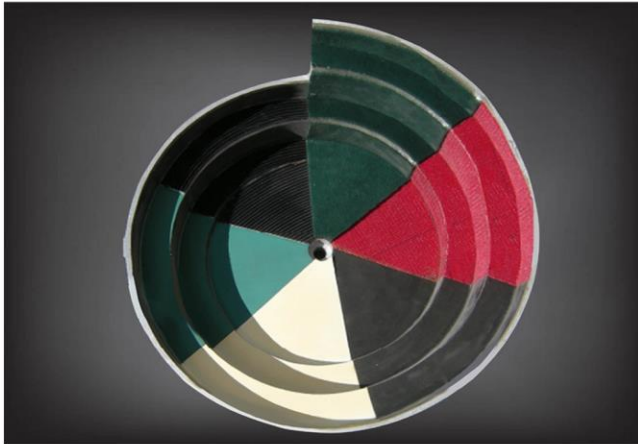
- Larger feeding track width
- Pre-orientate components
- Larger capacity
- Ideal for larger loads

| Drive Unit | Applicable Bowl Diameter (Ø) | Track Width (mm) | Height (mm) |
|------------|------------------------------|------------------|-------------|
| DF-15      | 180                          | 15               | 90          |
| DF-25      | 300                          | 20               | 120         |
| BF-35      | 350                          | 32               | 140         |
| BF-45      | 450                          | 40               | 140         |
| BF-50      | 600                          | 50               | 180         |
| BF-60      | 720                          | 65               | 200         |

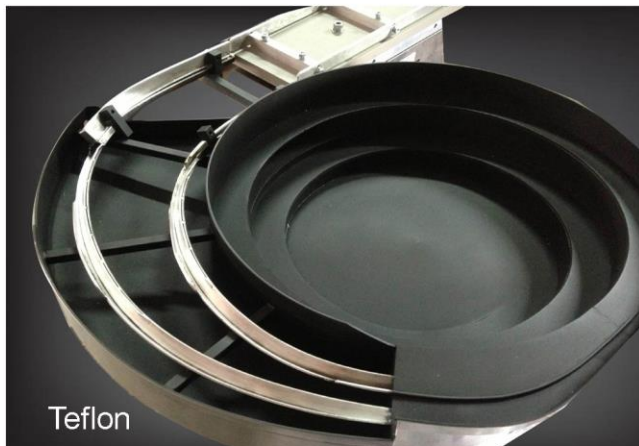


## Treatments

The coating protects the feeding parts to minimize friction between the workpiece and bowl surface. It can also reduce the noise generated. Other coatings are available and can be selected according to the application.



Brush green - For metal wet/oily parts  
 Flock red - For special applications  
 Polyurethane black - For metal dry parts  
 Habasit white - For plastic parts FDA  
 Habasit green - For plastic parts  
 Polyurethane black ribbed - For metal wet parts



Teflon



Sandblast



Polyurethane



Diamond Profile Lining

## CNC Precision Bowl

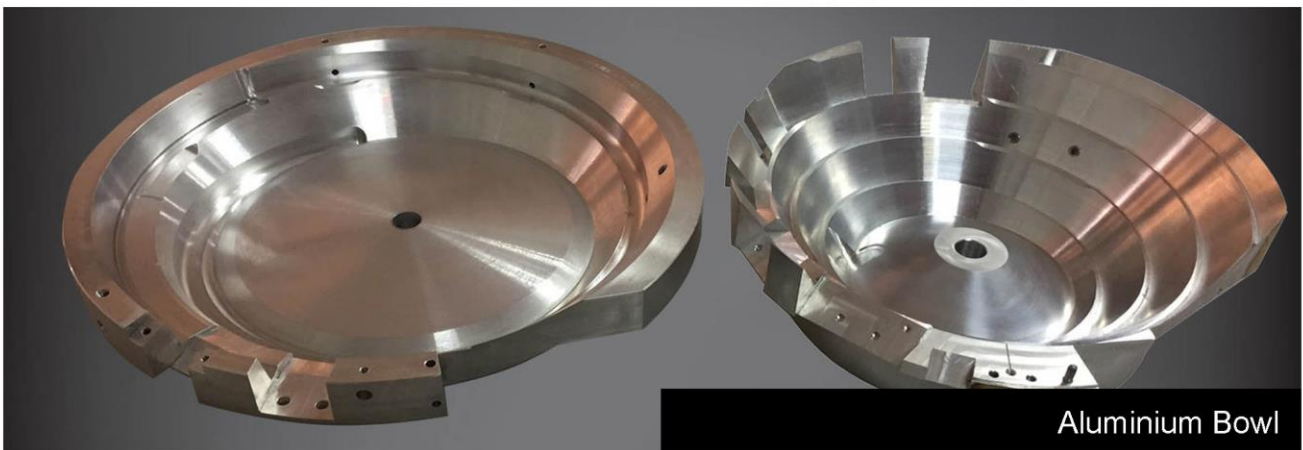
5 Axis CNC precision milling is among the most effective processes for industrial jigs and fixtures. Aluminium, stainless steel are just a few of the materials that are ideal for cutting. No matter what materials your project needs, these sophisticated tools can cut it with a precise, high-quality edge.



CNC Precision Milling



Jigs & Fixtures



Aluminium Bowl

Designs & Fabrication

# HI-FEED TECHNOLOGY

Parts Handling Specialist



## Malaysia

### Hi-Feed Technology Sdn. Bhd.

No. 1, Jalan Anggerik  
Mokara 31/53  
Kota Kemuning, 40460  
Shah Alam, Selangor,  
Malaysia.

Tel : 603-5124 8130/31  
Fax : 603-5124 8134

E-mail : [sales@hifeed.com.my](mailto:sales@hifeed.com.my)  
Website : [www.hifeed.com.my](http://www.hifeed.com.my)

## Singapore

### SJR Automation Pte. Ltd.

100 Eunos Avenue 7,  
#03-14,  
Singapore 409572.

Tel : +65 69097668  
Mobile : +65 93836118

Email : [sales@sjrautomation.com](mailto:sales@sjrautomation.com)  
Website : [www.sjrautomation.com](http://www.sjrautomation.com)

## China

### GuanZhou WanShun co.

2F, No. 60 Building, Tangxi  
Industrial Park.  
Guanghua 4 Road,  
Baiyun District, China.

Tel : 020-86301659 /34226320  
Fax : 020-86301531

E-mail : [sales@gzwanshun.com](mailto:sales@gzwanshun.com)  
Website : <http://www.gzwanshun.com>